



2025 AYC Sail Racing Season

SEASON OPENER May 3, 2025

TUESDAY RACING SPRING SERIES May 6– July 8

TUESDAY RACING SUMMER SERIES July 15 – September 16

MEMORIAL CUP July 19

ASTORIA REGATTA August 8 & 9 (see separate NOR)

CLOSING DAY RACE September 20

Astoria Yacht Club (Organizing Authority)
Astoria, Oregon, USA

NOTICE OF RACE

1. RULES

- 1.1 Races will be governed by the rules as defined in *The Racing Rules of Sailing* (RRS).
- 1.2 The prescriptions of *US Sailing* will apply; except that the prescriptions regarding Rule 63.2 and Rule 63.4 shall not apply.
- 1.3 The notation '[DP]' in a rule means that the penalty for a breach of that rule may, at the discretion of the protest committee, be less than disqualification. The notation '[NP]' in a rule means that a boat may not protest another boat for breaking that rule. This changes RRS 60.1(a).
- 1.4 RRS 40 will be changed as follows: Replace the entire Rule with, "Competitors shall wear personal flotation devices, except briefly while changing or adjusting clothing or personal equipment. This rule applies at all times while afloat. Wet suits and dry suits are not personal flotation devices. Flag Y need not be displayed." [DP]

2. ELIGIBILITY AND ENTRY

- 2.1 All races are open to all boats of a one-design, level or PHRF class. At least three boats are required to constitute a separate one-design class or level fleet class, and they must so advise the race committee of their intent to be scored as a separate class prior to the competitor meeting for the applicable regatta or series.
- 2.2 PHRF handicap ratings will be assigned by the organizing authority to all boats racing as a PHRF class using US Sailing data or other current rating certification as a base rating guideline. Boats being entered in any non-stock configuration that would alter their base rating may be required to provide evidence of their non-stock configuration prior to racing; provided that failure to do so may result in an adjusted base rating being assigned for that boat.
- 2.3 Eligible boats shall enter by completing the [Astoria Yacht Club Registration Form](#) (**Attachment A**) and paying the applicable fee prior to competing. The entry form and race entry fee must be received by the organizing authority prior to the end of the competitor meeting for the applicable regatta or race. [DP]
- 2.4 Each boat shall provide the race committee with emergency contact information for each person aboard. A completed [Race Crew Manifest Form](#) (**Attachment B**) shall be provided to the race committee each day prior to the signal boat leaving its moorage. [DP]

- 2.5 Boats shall have and monitor a working VHF marine radio capable of transmitting and receiving on channels 13, 16, and 68 at all times while afloat. [DP]

3. FEES

3.1 Entry fees are as follows:

Event	AYC Members	Non- Members
Spring Tuesday Series	\$75	\$110
Summer Tuesday Series	\$75	\$110
Both Tuesday Series	\$140	\$210
Tuesday Series Single Race	\$15	\$20
Season Opener	\$15*	\$20*
Memorial Cup	\$35	\$50
Closing Day Race	\$15*	\$20*
Full Season - All races listed above	\$165	\$250

* No fee for Season Opener and Closing Day Race when paying for both Tuesday series or Full Season.
(Astoria Regatta fees are listed separately and not included above – Please see the Astoria Regatta NOR for more information)

3.2 Entry fees do not include berthing or post-racing refreshments.

4. SCHEDULE

- 4.1 The dates of racing, scheduled time of the competitor meeting, and scheduled time of the warning signal for the first race each day are listed in **Attachment C**.
- 4.2 Competitor meetings for Tuesday series races will be held on the first Tuesday of each series and prior to each pursuit race.
- 4.3 Competitor meetings for each weekend regatta will be held prior to racing on the first day of the regatta.
- 4.4 All competitor meetings will be held at the Astoria Yacht Club or as otherwise specified by the race committee on the Astoria Yacht Club web site (<https://www.astoriayachtclub.com/>). Additional competitor meetings may be called at such times and places specified by the race committee on the Astoria Yacht Club web site.
- 4.5 Only the person in charge for each boat, or a crew member designated by the person in charge, shall attend a competitor meeting. Attendance is required prior to a boat's first race in a Tuesday series and for each weekend regatta. [DP]

5. MEASUREMENT

- 5.1 A boat shall comply with RRS 78.1 at registration and thereafter. [DP]
- 5.2 Inspection and measurement checks may be performed by a technical committee appointed by the organizing authority on any boat at any time prior to or following racing with respect to compliance with rating or safety rules.

6. SAILING INSTRUCTIONS

Sailing Instructions will be available after April 22, 2025 at the Astoria Yacht Club race office and the Astoria Yacht Club website.

7. VENUE

Attachments D & E show the location of the racing areas on the Columbia River in the vicinity of Astoria, Oregon.

8. PENALTY SYSTEM

The following prescription of *US Sailing* will apply: Appendix V1.

9. SCORING

- 9.1 One (1) race is required to be completed to constitute a regatta or series.

- 9.2** To be included in the final series standings for a Tuesday race series, a boat must be registered for the entire series. A boat's series score will be the total of her race scores excluding her worst three scores.
- 9.3** With respect to any series other than a Tuesday race series, scores will be computed as follows:
- 9.3.1** When fewer than 5 races have been completed, a boat's series score will be the total of her race scores (no excluded scores) *The exception will be the pursuit series, see 9.3.3
- 9.3.2** When 5 or more races have been completed, a boat's series score will be the total of her race scores excluding her worst score (one excluded score).
- 9.3.3** The pursuit series is usually 4 races and sailed within the regular Tuesday night schedule. If 4 races have been completed there will be one excluded score.
- 9.4** Tuesday series races conducted as pursuit races will be part of that Tuesday series and will also be scored separately with all pursuit races as their own series.
- 9.5** A boat that is raced short or single handed, or without flying sails, may have its PHRF rating adjusted for individual races for Tuesday night races. A boat will declare a handicap for weekend regattas and will sail under that handicap and requirements for the entire regatta regardless of changes to crew size or flying sails. The boat shall notify the race signal boat crew of a request for rating adjustment prior to the warning signal for the affected race or races, or if there will be no race signal boat for that race, the race committee must be notified by email no later than one hour prior to the scheduled starting time at ayracecommittee97103@gmail.com. [DP] The adjustment for all boats will be as follows:
- Short-handed crew - PHRF rating plus 6 seconds
- (For boats less than 32' LOA, two crew members; for boats 32' LOA or greater, three crew members)
- Single handed crew - PHRF rating plus 12 seconds
 - No flying sails - PHRF rating plus 18 seconds

10. PRIZES

Prizes may be given at the discretion of Astoria Yacht Club.

11. DISCLAIMER OF LIABILITY

- 11.1** Competitors participate at their own risk. See RRS 4 Decision to Race. The organizing authority will not accept any liability for material damage, personal injury or death sustained in conjunction with or prior to, during, or after racing. Competitors accept full responsibility for their actions during any activity related to the organizing authority, including on-shore activities before, during, and after racing.
- 11.2** Competitors are expected to abide by Port of Astoria rules with respect to Port facilities. [DP]

12. INSURANCE

- 12.1** Each participating boat shall be insured with valid third-party liability insurance with a minimum coverage of \$300,000 per incident or the equivalent.
- 12.2** Each participating boat shall be prepared to supply proof of insurance upon request.

13. RIGHT TO USE NAME AND LIKENESS

By participating in any Astoria Yacht Club racing event, all competitors automatically grant Astoria Yacht Club the right to make, use and show, at any time and at its discretion, any photographs or recordings produced during the event without compensation. Astoria Yacht Club reserves the right to require some or all competitors to carry tracking or media recording or transmitting devices while racing. [DP]

14. FURTHER INFORMATION

The Port of Astoria maintains ramp launching facilities at the East Basin Marina and crane launching facilities at the Port of Astoria boat yard. For information regarding Port of Astoria facilities and availability of transient moorage, see: <http://portofastoria.com/>. Further information is available online at <http://www.astoriayachtclub.com/>. Any questions concerning these instructions, scoring, or any other racing issues shall be submitted in writing to the race committee at ayracecommittee97103@gmail.com. Written inquiries and responses will be posted online at <http://www.astoriayachtclub.com/>.

ATTACHMENT A



Race Entry Form

Please complete the entire form

Check one: ☐ Spring Tuesday Series – All Races ☐ Summer Tuesday Series – All Races
☐ Tuesday Series – One Race

☐ Season Opener ☐ Memorial Cup ☐ Closing Day Race

☐ All Season Races except Astoria Regatta

☐ Other: _____

Boat Name: _____ Skipper: _____

Sail Number: _____ Boat Type: _____

Length: _____ PHRF Rating: _____

Racing Designation: (Check one) ☐ PHRF ☐ Level Class ☐ One-Design ☐ Cruising

Mailing Address: _____

Home Phone: _____ Cell Phone: _____

Email: _____ Yacht Club Affiliation: _____

U.S. Sailing Membership Number: _____

In consideration of acceptance of my participation in this event, I acknowledge and agree that my boat has a liability insurance policy currently in effect covering bodily injury and property damage with a per occurrence limit of liability of not less than \$300,000 and said policy does not exclude yacht racing activities.

Each competing boat shall be responsible for providing to the race committee a crew manifest with emergency contact information for each crew member (NoR - Attachment B). Crew manifest information shall be provided to the race committee for each racing day prior to the race signal boat leaving its moorage, in the manner prescribed by the race committee.

I agree to be bound by The Racing Rules of Sailing, those stated in notice of race and sailing instructions, and by all other rules that govern this event.

Date: _____ Entry Fee Enclosed: \$ _____

Signature of Skipper: _____

Please mail or deliver this completed and signed form with the applicable entry fee to the race committee prior to the entry deadline indicated in the Notice of Race.

ATTACHMENT B



Race Crew Manifest

Boat: _____ Skipper: _____ Date: _____

Crew Member	Crew Cell Phone	Emergency Contact	Emergency Phone

ATTACHMENT C

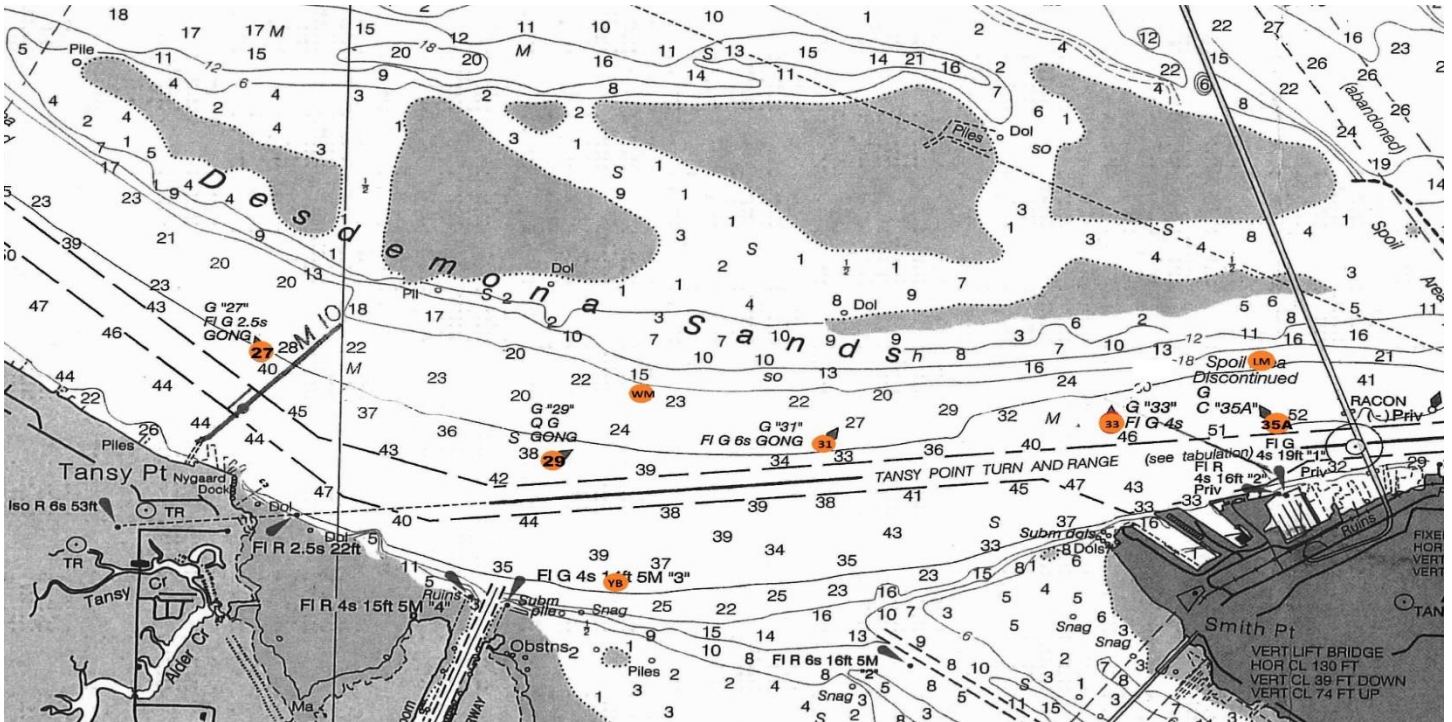


2025 SCHEDULE OF RACES

Event	Race Meeting	Race Dates	First Warning Signal
Spring Tuesday Racing Series	1730	May 6, 13, 20, 27 June 3, 10, 17, 24 July 1, 8	1825
Summer Tuesday Racing Series	1715	July 15, 22, 29 Aug 12, 19, 26	1810
	1700	Sept 2, 9, 16	1755
Pursuit Races	1715	Jul 1, 8	1825
	1700	July 15, 22	1810
Season Opener	TBA	May 3	To be announced at race meeting
Memorial Cup	TBA	July 19	To be announced at race meeting
Closing Day Race	TBA	September 20	To be announced at race meeting

ATTACHMENT D

Astoria Racing Area – West of Megler Bridge



The Start-Finish Line (S/F) will terminate at Buoy 33

Numbers refer to navigation buoy numbers.

WM = Windward Mark set or designated by Race Committee

LM = Leeward Mark set or designated by Race Committee

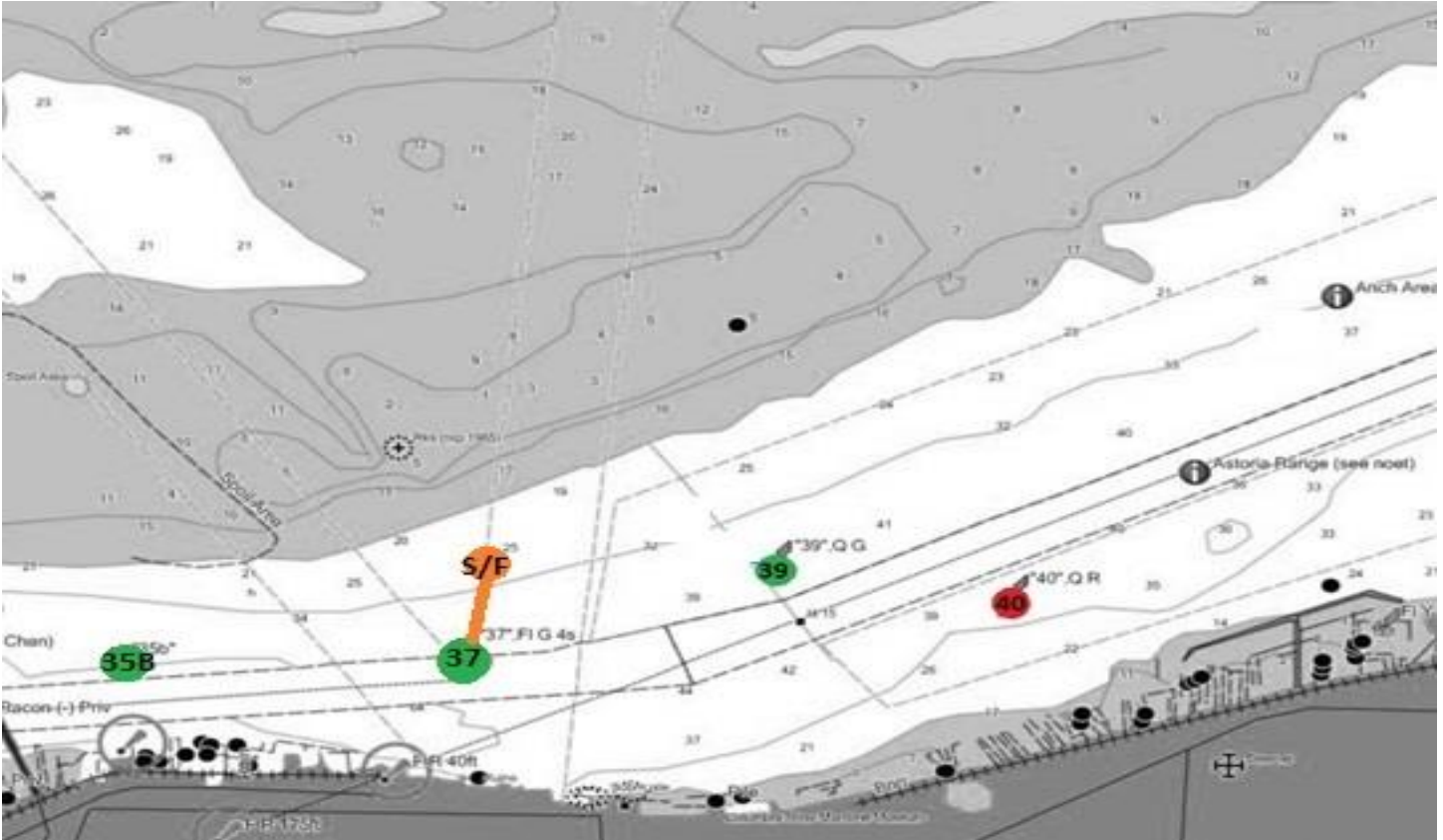
YB = Yellow Buoy set by Race Committee

- Race Committee may replace 35A with LM during strong ebb tide

See NOAA "Columbia River" Chart #18521.

ATTACHMENT E

Astoria Racing Area – East of Megler Bridge



S/F = Start-Finish Line

Numbers refer to navigation buoy numbers.
See NOAA "Columbia River" Chart #18521.