



ASTORIA REGATTA

August 10 & 11, 2023

Astoria Yacht Club (Organizing Authority)
Astoria, Oregon, USA

SAILING INSTRUCTIONS

1. RULES

- 1.1 Race signal "AP" will be changed as follows: Replace the second sentence with "The warning signal will be made no less than 2 minutes after removal."
- 1.2 Any type of self-steering apparatus may be used by competitors who are registered as sailing single-handed or short-handed, but competitors must maintain a watch on deck at all times. This changes RRS 52.

2. CHANGES TO SAILING INSTRUCTIONS

- 2.1 Except as provided in paragraph 2.2, any change to the sailing instructions or a race cancellation will be posted no later than one hour before the scheduled warning signal on the day it will take effect.
- 2.2 The race committee may make oral changes to the sailing instructions on the water which shall be announced by VHF marine radio. The failure to make announcements, the failure to hear the communications, or any other issue regarding the communication shall not be grounds for redress by a boat. This changes RRS 60.1(b).

3. RACES

- 3.1 There will be one or more races per day for each class.
- 3.2 The race committee may display flag A (with no sound) while boats are finishing to signal that there will be no more races conducted that day.

4. CLASS FLAGS

- 4.1 Class flags will be international code flag numeral pennants.
- 4.2 Unless announced at a competitor meeting or posted pursuant to paragraph 2.1, the class flag for all competitors will be code pennant number "1".

5. COURSES

- 5.1 **Attachments A & B** list the courses, including the order in which marks are to be passed and the approximate course lengths.
- 5.2 No later than the warning signal, the signal boat will display a number corresponding to the course.
- 5.3 With the course number, the signal boat will designate on which side each mark is to be left by displaying a "P" for port or "S" for starboard. If no side is designated, all marks shall be left to port. Gate marks may be rounded in either direction.

6. MARKS

- 6.1 Marks are described in **Attachments A & B**.
- 6.2 The starting and finishing marks will be Buoy 33 for races started west of the Astoria-Megler Bridge and Buoy 37 for races started east of the Astoria-Megler Bridge, unless otherwise designated by the race committee.

7. THE START

7.1 Races will be started:

7.1.1 Using RRS 26 with the warning signal made 5 minutes before the starting signal, or

7.2 The starting line will be between a staff displaying an orange flag on the signal boat and the course side of the opposite starting mark.

7.3 A boat that does not *start* within ten (10) minutes of her starting signal will be scored DNS without a hearing. This changes RRS 63.1 & A5.

7.4 The signal boat may hail the names and/or sail numbers of OCS boats. The failure to make hails, the failure to hear the hail, or any other issue regarding the hail shall not be grounds for redress by a boat. This changes RRS 60.1(b).

8. CHANGE OF THE NEXT LEG OF THE COURSE

RRS 33 will be changed as follows: Replace the entire rule with, "The race committee may change a leg of the course that begins at a rounding *mark* by changing the position of the next *mark* (or the finishing line) and signaling all boats by VHF marine radio of the change before they begin the leg. The next *mark* need not be in position at that time. Subsequent legs may be changed without further signaling to maintain the course shape."

9. THE FINISH

The finishing line will be between a staff displaying an orange flag on the signal boat and the course side of the opposite finishing mark. See US Sailing prescription regarding RRS 34. [DP]

10. TIME LIMITS

For a boat that *starts*, but does not *finish* before civil sunset shall be scored DNF without a hearing. This changes RRS 35, 63.1 & A5.

11. PROTESTS AND REQUESTS FOR REDRESS

11.1 Protest forms may be obtained from the race committee. Protests and requests for redress or reopening shall be delivered to the race committee in person or to aycracecommittee97103@gmail.com within the appropriate time limit.

11.2 The protest time limit is 90 minutes after the last boat to *finish* the last race of the day or after the last race has been abandoned, or 60 minutes after the signal boat has docked, whichever is later.

11.3 Notices of protests by the race committee, technical committee or protest committee will be posted to inform boats under RRS 61.1(b).

12. SCORING

12.1 One race is required to be completed to constitute a regatta or series.

12.2 Scores for a regatta or a series will be computed as follows:

12.2.1 When fewer than 5 races have been completed, a boat's series score will be the total of her race scores (no excluded scores).

12.2.2 When 5 or more races have been completed, a boat's series score will be the total of her race scores excluding her worst score (one excluded score).

12.3 A boat that is raced short or single handed, or without flying sails, may have its PHRF rating adjusted for an individual race or an entire Tuesday series, or for an entire weekend regatta. The boat shall notify the race signal boat prior to the affected race or races or notify the race committee prior to racing of a request for rating adjustment at aycracecommittee97103@gmail.com. [DP]
The adjustment for all boats will be as follows:

12.3.1 Short-handed crew - PHRF rating plus 6 seconds

(For boats less than 32' LOA, two crew members; for boats 32' LOA or greater, three crew members)

12.3.2 Single-handed crew - PHRF rating plus 12 seconds

12.3.3 No flying sails - PHRF rating plus 18 seconds

13. SAFETY REGULATIONS

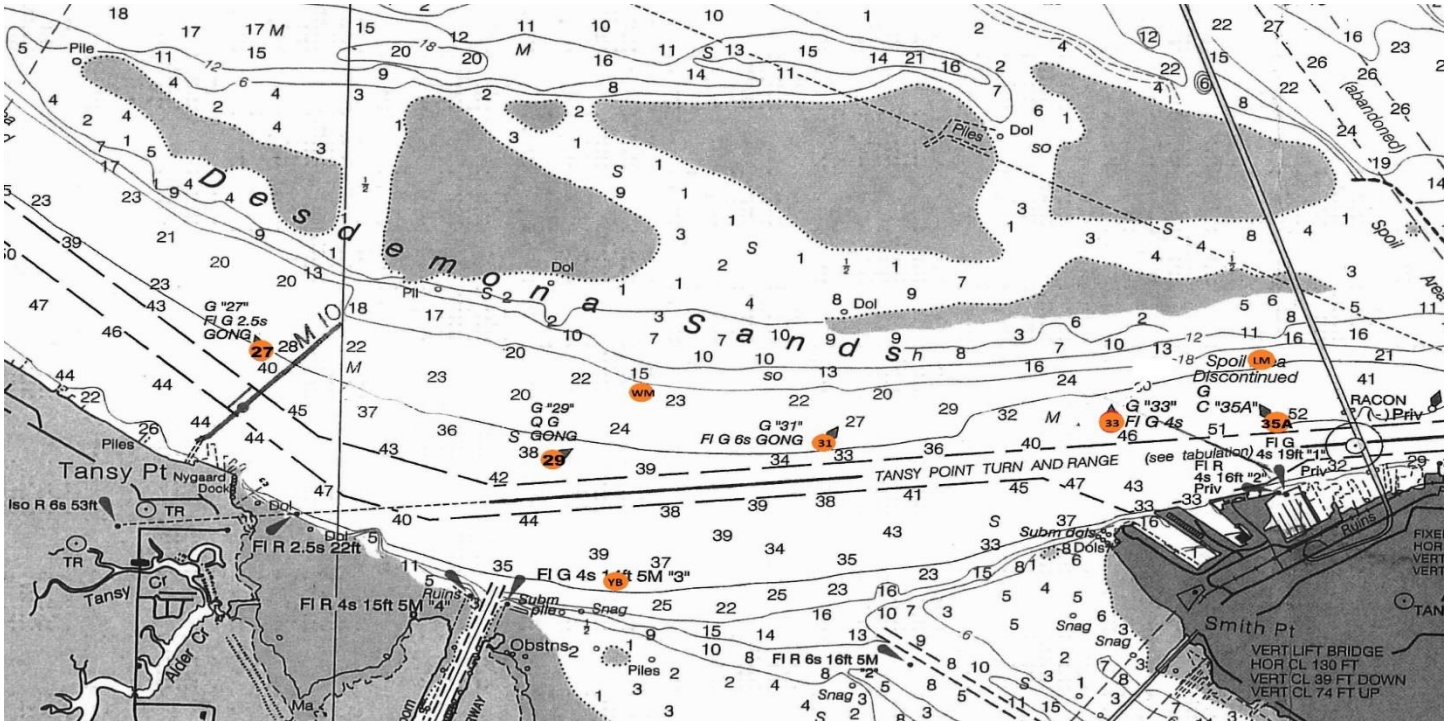
- 13.1** Racing occurs in an area of active shipping, fishing, and other non-race maritime activities. The Racing Rules of Sailing provide that "...When a boat sailing under these rules meets a vessel that is not, she shall comply with the... government right-of-way rules..." Such rules include Rule 9 (Narrow Channels) of the U.S. Inland Navigation Rules Act of 1980, which provides that a sailing vessel shall not impede the passage of a vessel that can only navigate within a narrow channel or fairway. A boat that fails to comply promptly with signals from a race official to alter course, or that receive a 5-blast warning (5 short sounds) from a stand-on vessel, cannot exonerate herself from such failure, and will be subject to protest and possible disqualification that is not excludable. The Organizing Authority will cooperate with and provide relevant information to the Coast Guard or other governmental agencies regarding investigations of any boat impeding vessel traffic or otherwise violating government right-of-way rules. [DP]
- 13.2** A boat that retires from a race or leaves the racing area between races shall notify the race committee in person, by phone or by VHF marine radio at the first reasonable opportunity. [DP]
- 13.3** Boats shall check in by VHF marine radio and provide the number of persons aboard prior to the first warning signal of the day when the signal boat is in the racing area. [DP]

14. RADIO COMMUNICATION

- 14.1** Except in an emergency, a boat that is racing shall not make voice or data transmissions and shall not receive voice or data communication that is not available to all boats. [DP]
- 14.2** Unless otherwise specified prior to racing, or advised by the race committee, VHF Marine radio channel 68 will be used for communication.
- 14.3** Boats shall have and monitor at all times while afloat a working VHF marine radio capable of transmitting and receiving on channels 13, 16, and 68. [DP]

ATTACHMENT A

Astoria Racing Area – West of Megler Bridge



See NOAA “Columbia River” Chart #18521.

S/F = Start-Finish Line

WM = Windward Mark set or designated by Race Committee

LM = Leeward Mark set or designated by Race Committee

YB = Young’s Bay - set by Race Committee

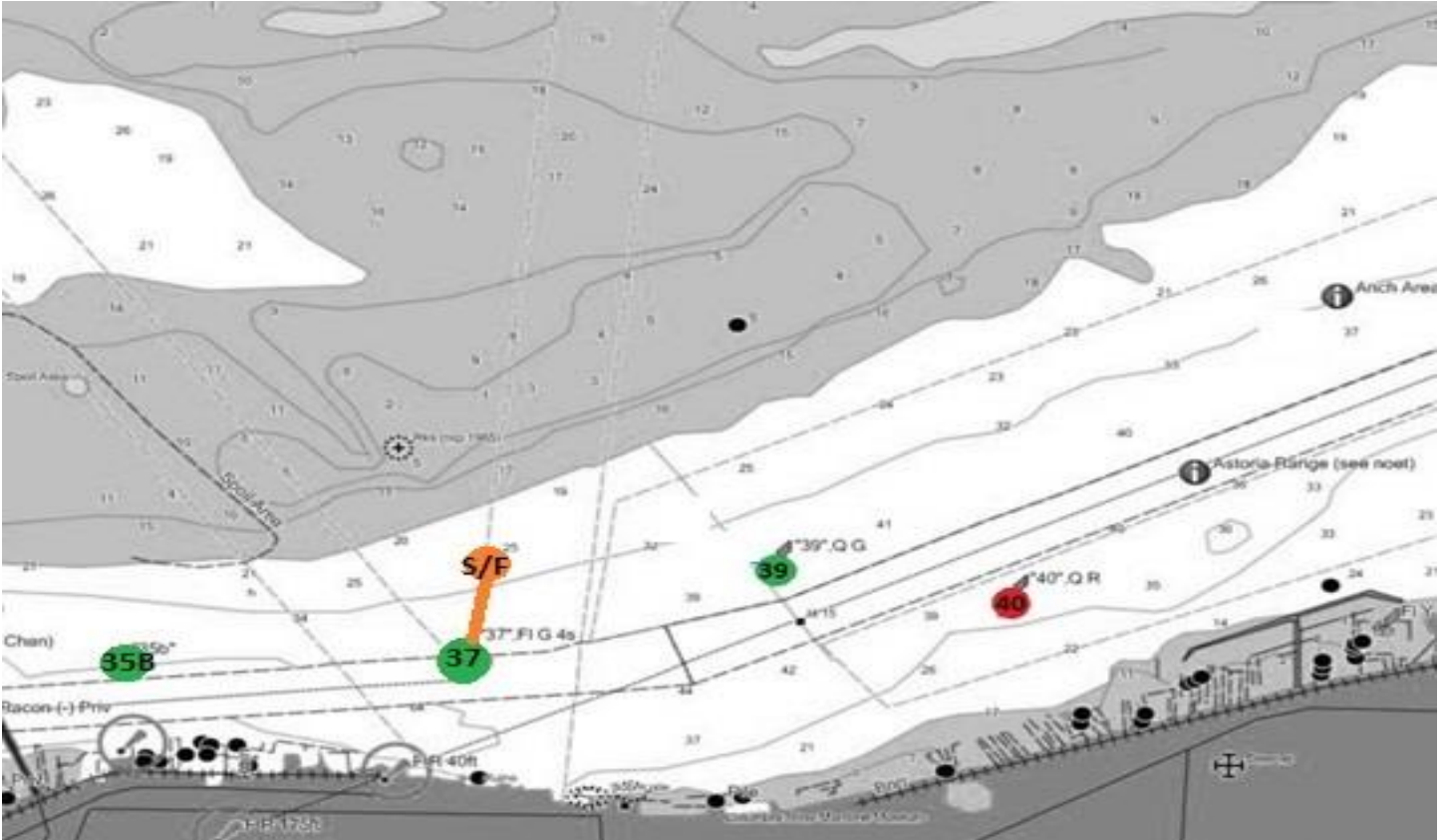
Race Committee may replace 35A with LM during strong ebb tide

See next page for course numbers

#	West Courses (S/F = 33)	Distance
1.	S/F-31-S/F	1.5
2.	S/F-31-35A-S/F	2.4
3.	S/F-31-33(gate)-31-S/F	3.0
4.	S/F-29-S/F	3.0
5.	S/F-29-35A-S/F	3.9
6.	S/F-29-33-31-S/F	4.5
7.	S/F-29-33(gate)-29-S/F	6.0
8.	S/F-27-S/F	4.6
9.	S/F-27-35A-S/F	5.5
10.	S/F-25-S/F	7.4
13.	S/F-YB-S/F	2.8
14.	S/F-YB-35A-S/F	3.7
15.	S/F-31-YB-S/F	2.9
16.	S/F-29-YB-S/F	3.4
17.	S/F-WM-S/F	2.3
18.	S/F-WM-33-WM-S/F	4.6
19.	S/F-WM-35A--S/F	3.1

ATTACHMENT B

Astoria Racing Area – East of Megler Bridge



See NOAA “Columbia River” Chart #18521

S/F = Start-Finish Line

WM = Windward Mark set or designated by
Race Committee

LM = Leeward Mark set or designated by Race
Committee

YB = Yellow Buoy set by Race Committee

See next page for course numbers

#	East Courses (S/F = 37)	Distance
20.	S/F-35B-S/F	1.1
21.	S/F-35B-39-S/F	2.1
22.	S/F-35B-39-35B-S/F	3.2
23.	S/F-35B-39-35B-39-S/F	4.2
24.	S/F-35B-40-S/F	2.8
25.	S/F-35B-40-35B-S/F	3.9
26.	S/F-35B-40-35B-40-S/F	5.6
27.	S/F-35B-40-39-S/F (Port)	2.9
28.	S/F-35B-39-40-S/F (Starboard)	2.9
29.	S/F-35B-42-S/F	5.9