



SEASON OPENER May 4, 2024

TUESDAY RACING SPRING SERIES May 7, 2024 – July 9, 2024

TUESDAY RACING SUMMER SERIES July 16, 2024 – September 17, 2024

MEMORIAL CUP July 20, 2024

CLOSING DAY RACE September 21, 2024

Astoria Yacht Club (Organizing Authority)
Astoria, Oregon, USA

SAILING INSTRUCTIONS

1. RULES

- 1.1 Race signal “AP” will be changed as follows: Replace the second sentence with “The warning signal will be made no less than 2 minutes after removal.”
- 1.2 Any type of self-steering apparatus may be used by competitors who are registered as sailing single-handed or short-handed, but competitors must maintain a watch on deck at all times. This changes RRS 52.

2. CHANGES TO SAILING INSTRUCTIONS

- 2.1 Except as provided in paragraph 2.2, any change to the sailing instructions or a race cancellation will be posted no later than one hour before the scheduled warning signal on the day it will take effect.
- 2.2 The race committee may make oral changes to the sailing instructions on the water which shall be announced by VHF marine radio. The failure to make announcements, the failure to hear the communications, or any other issue regarding the communication shall not be grounds for redress by a boat. This changes RRS 60.1(b).

3. RACES

- 3.1 There will be one or more races per day for each class.
- 3.2 The race committee may display flag A (with no sound) while boats are finishing to signal that there will be no more races conducted that day.

4. CLASS FLAGS

- 4.1 Class flags will be international code flag numeral pennants.
- 4.2 Unless announced at a competitor meeting or posted pursuant to paragraph 2.1, the class flag for all competitors will be code pennant number “1”.

5. COURSES

- 5.1 **Attachments A & B** list the courses, including the order in which marks are to be passed and the approximate course lengths.
- 5.2 No later than the warning signal, the signal boat will display a number corresponding to the course.
- 5.3 With the course number, the signal boat will designate on which side each mark is to be left by displaying a “P” for port or “S” for starboard. If no side is designated, all marks shall be left to port. Gate marks may be rounded in either direction.

6. MARKS

- 6.1 Marks are described in **Attachments A & B**.
- 6.2 The starting and finishing marks will be Buoy 33 for races started west of the Astoria-Megler Bridge and Buoy 37 for races started east of the Astoria-Megler Bridge, unless otherwise designated by the race committee.

7. THE START

- 7.1 Races will be started:
 - 7.1.1 Using RRS 26 with the warning signal made 5 minutes before the starting signal, or
 - 7.1.2 Using a “rabbit boat” as described in 7.3 & **Attachment C**, or
 - 7.1.3 Using a “pursuit start” as described in 7.4.
- 7.2 The starting line will be between a staff displaying an orange flag on the signal boat and the course side of the opposite starting mark.
- 7.3 Unless a race has been postponed, abandoned, or designated as a pursuit race by the race committee, when there is no signal boat on station at the starting line at least two minutes prior to the scheduled warning signal, the race will be started with a “rabbit boat”.
 - 7.3.1 The “rabbit boat” will be the competing boat with the fastest handicap rating, unless the boats present agree otherwise.
 - 7.3.2 The “rabbit boat” will record the start time and submit it to the race committee at ayracecommittee97103@gmail.com at the first reasonable opportunity. [DP]
 - 7.3.3 When a boat fails to *start* correctly, she shall avoid other boats that have started or are preparing to start and sail around and to the pre-start side of the designated starting mark before *starting*.
- 7.4 Pursuit races will be started using RRS 26 with the warning signal made 5 minutes before the starting signal for the boat(s) with the slowest handicap rating.
 - 7.4.1 The race committee will assign the starting times for each successive boat based upon her handicap rating. This time shall be her starting signal.
 - 7.4.2 Boats racing as a one design or level rating fleet will start together.
 - 7.4.3 All boats shall be considered *racing* at the preparatory signal for the first boat(s) to start.
 - 7.4.4 RRS 29.1 will be changed as follows: Replace the entire rule with, “When at a boat’s designated starting time any part of her hull is on the course side of the starting line she shall sail around either starting mark and across an extension of the starting line to the pre-start side keeping clear of other boats whose starting time is after hers before *starting*. The race committee will not display flag X or make a sound.”
 - 7.4.5 The starting line will be between a staff displaying an orange flag on the signal boat and the course side of the opposite starting mark.
 - 7.4.6 When there is no signal boat on station designating the starting line, boats will be deemed to have started when they pass abeam and within three boat lengths of the starting mark leaving the starting mark to port at or after their starting time while sailing in the direction of the next mark.
- 7.5 A boat that does not *start* within ten (10) minutes of her starting signal will be scored DNS without a hearing. This changes RRS 63.1 & A5.
- 7.6 The signal boat may hail the names and/or sail numbers of OCS boats. The failure to make hails, the failure to hear the hail, or any other issue regarding the hail shall not be grounds for redress by a boat. This changes RRS 60.1(b).

8. CHANGE OF THE NEXT LEG OF THE COURSE

RRS 33 will be changed as follows: Replace the entire rule with, "The race committee may change a leg of the course that begins at a rounding *mark* by changing the position of the next *mark* (or the finishing line) and signaling all boats by VHF marine radio of the change before they begin the leg. The next *mark* need not be in position at that time. Subsequent legs may be changed without further signaling to maintain the course shape."

9. THE FINISH

The finishing line will be between a staff displaying an orange flag on the signal boat and the course side of the opposite finishing mark. See US Sailing prescription regarding RRS 34. [DP]

10. TIME LIMITS

A boat that *starts*, but does not *finish* before civil sunset shall be scored DNF without a hearing. This changes RRS 35, 63.1 & A5.

11. PROTESTS AND REQUESTS FOR REDRESS

11.1 Protest forms may be obtained from the race committee. Protests and requests for redress or reopening shall be delivered to the race committee in person or to ayracecommittee97103@gmail.com within the appropriate time limit.

11.2 The protest time limit is 90 minutes after the last boat to *finish* the last race of the day or after the last race has been abandoned, or 60 minutes after the signal boat has docked, whichever is later.

11.3 Notices of protests by the race committee, technical committee or protest committee will be posted to inform boats under RRS 61.1(b).

11.4 Protests will be adjudicated by group designated by race committee, at time and place determined by them.

12. SCORING

12.1 One race is required to be completed to constitute a regatta or series. Only boats registered for one or both Tuesday racing series will be placed in standings for those races. Only boats registered for the entire season of races will be placed in standings for all races. Only boats racing in both pursuit races will be placed in standings for pursuit races.

12.2 Scores for a regatta or a series will be computed as follows:

12.2.1 When fewer than 5 races have been completed, a boat's series score will be the total of her race scores (no excluded scores).

12.2.2 When 5 or more races have been completed, a boat's series score will be the total of her race scores excluding her worst score (one excluded score).

12.3 Tuesday series races conducted as pursuit races will be part of that Tuesday series, and will also be scored separately with all pursuit races as their own series.

12.4 A boat that is raced short or single handed, or without flying sails, may have its PHRF rating adjusted for an individual race or an entire Tuesday series, or for an entire weekend regatta. The boat shall notify the race signal boat prior to the affected race or races or notify the race committee prior to racing of a request for rating adjustment at ayracecommittee97103@gmail.com. [DP] The adjustment for all boats will be as follows:

12.4.1 Short-handed crew - PHRF rating plus 6 seconds

(For boats less than 32' LOA, two crew members; for boats 32' LOA or greater, three crew members)

12.4.2 Single-handed crew - PHRF rating plus 12 seconds

12.4.3 No flying sails - PHRF rating plus 18 seconds

13. SAFETY REGULATIONS

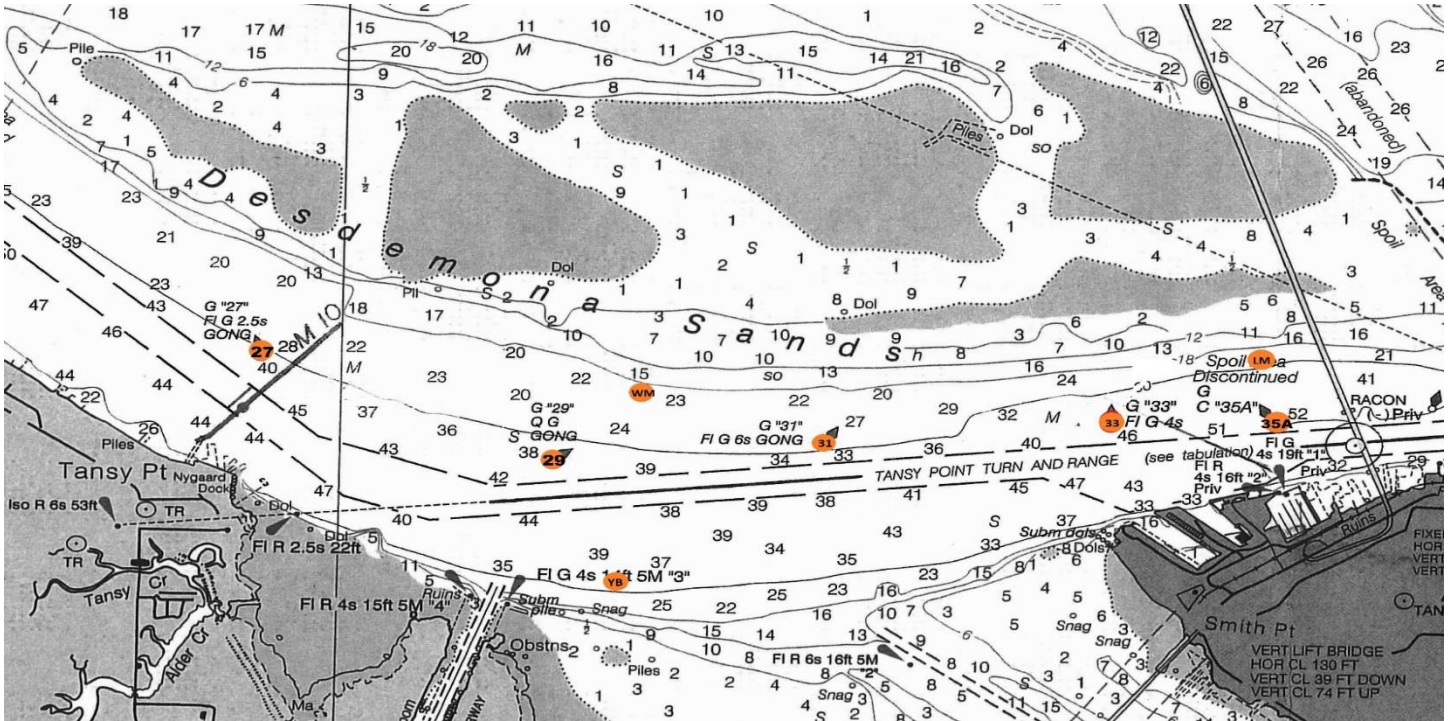
- 13.1** Racing occurs in an area of active shipping, fishing, and other non-race maritime activities. The Racing Rules of Sailing provide that "...When a boat sailing under these rules meets a vessel that is not, she shall comply with the... government right-of-way rules..." Such rules include Rule 9 (Narrow Channels) of the U.S. Inland Navigation Rules Act of 1980, which provides that a sailing vessel shall not impede the passage of a vessel that can only navigate within a narrow channel or fairway. A boat that fails to comply promptly with signals from a race official to alter course, or that receive a 5-blast warning (5 short sounds) from a stand-on vessel, cannot exonerate herself from such failure, and will be subject to protest and possible disqualification that is not excludable. The Organizing Authority will cooperate with and provide relevant information to the Coast Guard or other governmental agencies regarding investigations of any boat impeding vessel traffic or otherwise violating government right-of-way rules. [DP]
- 13.2** A boat that retires from a race or leaves the racing area between races shall notify the race committee in person, by phone or by VHF marine radio at the first reasonable opportunity. [DP]
- 13.3** Boats shall check in by VHF marine radio and provide the number of persons aboard prior to the first warning signal of the day when the signal boat is in the racing area. [DP]

14. RADIO COMMUNICATION

- 14.1** Except in an emergency, a boat that is racing shall not make voice or data transmissions and shall not receive voice or data communication that is not available to all boats. [DP]
- 14.2** Unless otherwise specified prior to racing, or advised by the race committee, VHF Marine radio channel 68 will be used for communication.
- 14.3** Boats shall have and monitor at all times while afloat a working VHF marine radio capable of transmitting and receiving on channels 13, 16, and 68. [DP]

ATTACHMENT A

Astoria Racing Area – West of Megler Bridge



See NOAA “Columbia River” Chart #18521.

S/F = Start-Finish Line

WM = Windward Mark set or designated by Race Committee

LM = Leeward Mark set or designated by Race Committee

YB = Young’s Bay - set by Race Committee

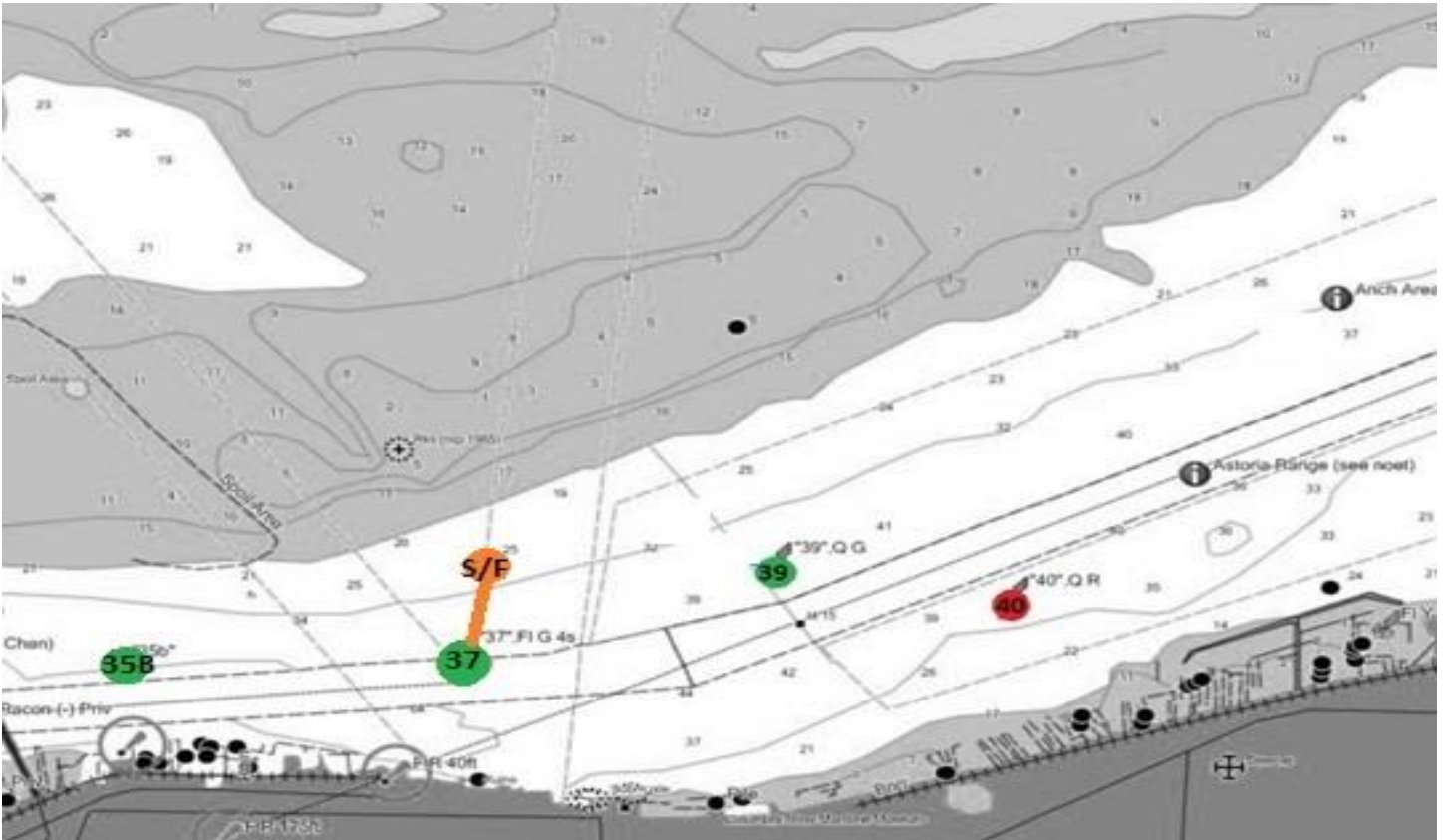
Race Committee may replace 35A with LM during strong ebb tide

See next page for course numbers

#	West Courses (S/F = 33)	Distance
1.	S/F-31-S/F	1.5
2.	S/F-31-35A-S/F	2.4
3.	S/F-31-33(gate)-31-S/F	3.0
4.	S/F-29-S/F	3.0
5.	S/F-29-35A-S/F	3.9
6.	S/F-29-33-31-S/F	4.5
7.	S/F-29-33(gate)-29-S/F	6.0
8.	S/F-27-S/F	4.6
9.	S/F-27-35A-S/F	5.5
10.	S/F-25-S/F	7.4
13.	S/F-YB-S/F	2.8
14.	S/F-YB-35A-S/F	3.7
15.	S/F-31-YB-S/F	2.9
16.	S/F-29-YB-S/F	3.4
17.	S/F-WM-S/F	2.3
18.	S/F-WM-33-WM-S/F	4.6
19.	S/F-WM-35A--S/F	3.1

ATTACHMENT B

Astoria Racing Area – East of Megler Bridge



See NOAA “Columbia River” Chart #18521

S/F = Start-Finish Line

WM = Windward Mark set or designated by Race Committee

LM = Leeward Mark set or designated by Race Committee

YB = Yellow Buoy set by Race Committee

See next page for course numbers

#	East Courses (S/F = 37)	Distance
20.	S/F-35B-S/F	1.1
21.	S/F-35B-39-S/F	2.1
22.	S/F-35B-39-35B-S/F	3.2
23.	S/F-35B-39-35B-39-S/F	4.2
24.	S/F-35B-40-S/F	2.8
25.	S/F-35B-40-35B-S/F	3.9
26.	S/F-35B-40-35B-40-S/F	5.6
27.	S/F-35B-40-39-S/F (Port)	2.9
28.	S/F-35B-39-40-S/F (Starboard)	2.9
29.	S/F-35B-42-S/F	5.9

ATTACHMENT C



Astoria Yacht Club Rabbit Start Instructions

The rabbit start is used to start a race to windward in the absence of a race signal boat. The “rabbit boat” starts the race by passing the designated starting mark on port tack. The other boats must pass behind the rabbit boat on starboard tack in order to start, as follows:

Before the starting time, the rabbit boat will reach back and forth above the starting mark and along the starting line area. All other boats must stay downwind of the starting mark and rabbit boat prior to the start.

The rabbit boat will provide **three sounds** during the starting sequence.

The **first sound** will be when the rabbit boat passes the starting mark on starboard tack to begin the starting sequence.

The **second sound** will be as the rabbit boat tacks (or gybes) to head back for the starting mark on port tack. This will be approximately one minute after the first sound.

The **third sound** will be as the rabbit boat passes the starting mark on port tack. This will be approximately one minute after the second sound.
This is the starting signal.

The rabbit boat will remain approximately close hauled on port tack from the time of passing the starting mark for at least two minutes or until all boats have started, whichever occurs first.

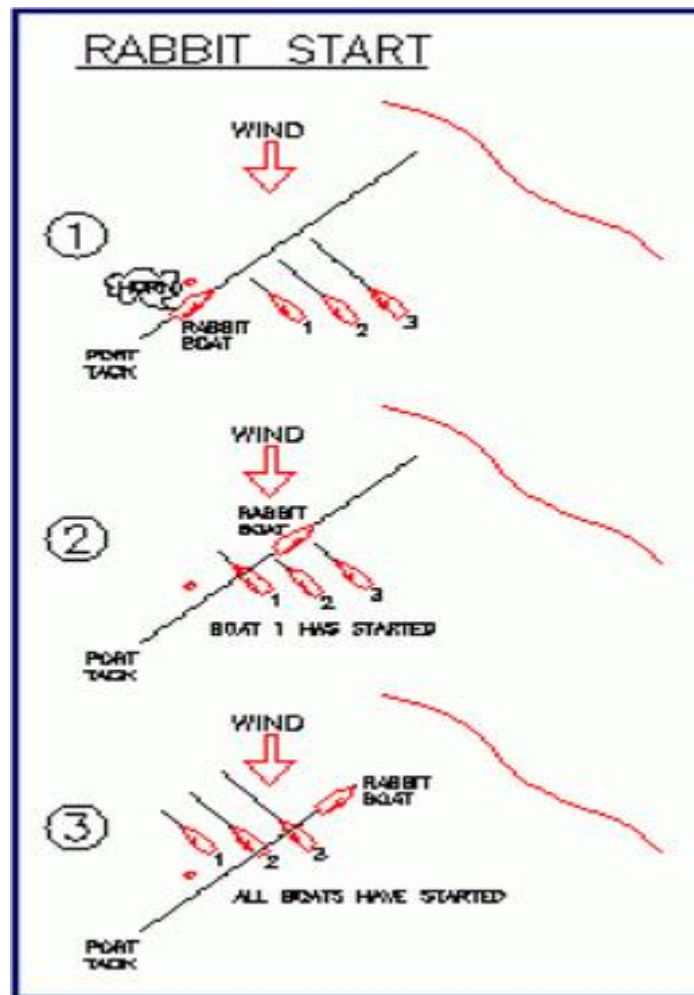
The starting line is the line between the port-end starting mark and the rabbit boat, to the point where the rabbit boat tacks onto starboard. A boat starts when it crosses the starting line on starboard tack while the rabbit boat is on port tack after the third sound, or the line to where the rabbit boat tacked to starboard tack after the third sound. After starting, all boats shall remain on starboard tack for at least two minutes or until the rabbit boat has tacked to starboard, whichever occurs first.

All times are approximate.

A boat making contact or interfering with the rabbit boat is automatically disqualified from the race and shall retire.

These instructions may be modified by mutual agreement of a majority of registered boat skippers by designating one of the registered boats as the rabbit boat and that boat will act in lieu of the signal boat by holding station at the starboard end of the starting line, signaling the sequence to the boats intending to race, and until the starting signal before it starts racing.

ATTACHMENT C (CONT.)



- Boats that find themselves to windward and unable to cross behind the rabbit boat on starboard tack after the starting signal will be considered "OCS" (on the course side of the starting line at the start). A late starting boat that has not crossed the starting line during the first two minutes following the starting signal shall be considered an OCS boat.
- OCS boats **must** round the starting mark end of the starting line (keeping the mark to port) in order to be counted as a starter. No dip starts are permitted.
- While maneuvering, OCS boats must keep clear of all boats that have properly started.
- Your elapsed time starts counting at the starting signal.
- The rabbit boat starts on port tack and the fleet starts on starboard tack. You cannot start by following the rabbit boat. If you do so, you will have no rights and will be considered OCS. You then must round the starting mark to start properly on starboard tack.